

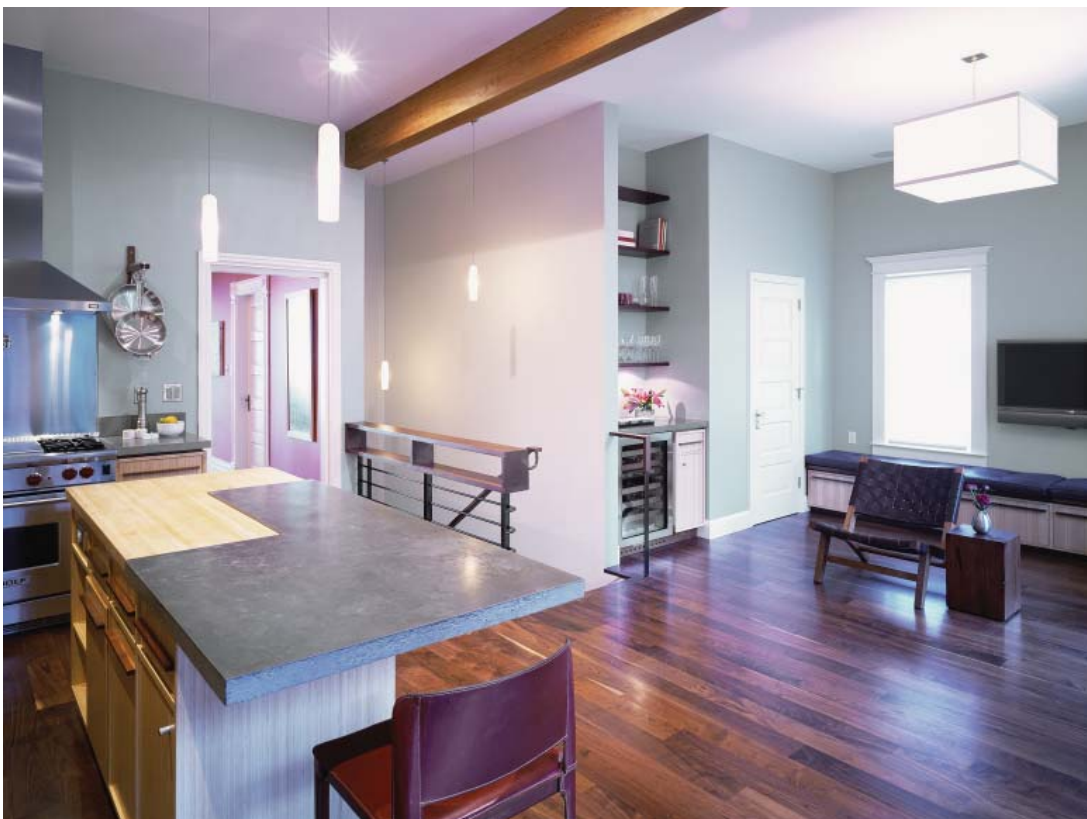


Shingle-Style Estate | San Francisco, California

This is a complete gut and re-build of a 1907 Shingle Style house in upper Noe Valley. The house went from a 2 bedroom, 1 bath (no garage) to a 4 bedroom, 3.5 bath, 2-car side-by-side garage. The design stays true to the period shingle-style detailing on the exterior and seamlessly transitions into a clean, modern interior.

MAIL 1686 15th Street, San Francisco, CA 94103 TEL 415 241 7160 FAX 415 241 7164 WEB www.boorbridges.com





The location of this house, sited on a steep slope in upper Noe Valley, provided an opportunity to excavate down and convert a previously sub-height level into the new bedroom floor (master suite, two children's bedrooms/baths, and laundry). The upper floor became the main living space with living, dining, kitchen, family, and guest suite.

Using innovative engineering and sidewalk warping, we squeezed a 2-car garage under the master bedroom and created a deck with sweeping views of the San Francisco Bay. Custom furniture, doors, railing and cabinets by Union Studio provide an elegant, modern touch to this traditional shingle-style house.

Size: 2,400 SF house; 600 SF garage
Completion: Spring 2005
Contractor: Ryan Associates
Interiors: Union Studio
Photography: Sharon Risedorph

